



COMPONENTS FOR PROFINET AND INDUSTRIAL NETWORKS

Industrial Remote Solutions | Industrial Ethernet | Fieldbus applications | Distributed fieldbus I/O system

INDUSTRIAL REMOTE SOLUTIONS



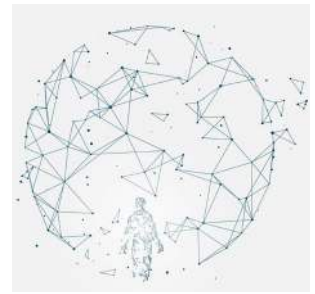
REX 100 Ethernet router
WAN | 3G | LTE (EU & NAG) | WiFi



REX 200/250, Ethernet router
WAN | LTE | WiFi
Optional with PROFIBUS and serial interface



myREX24 V2 portal
Secure IOT remote maintenance access
Remote maintenance | Visualization | Alarming | Protocols



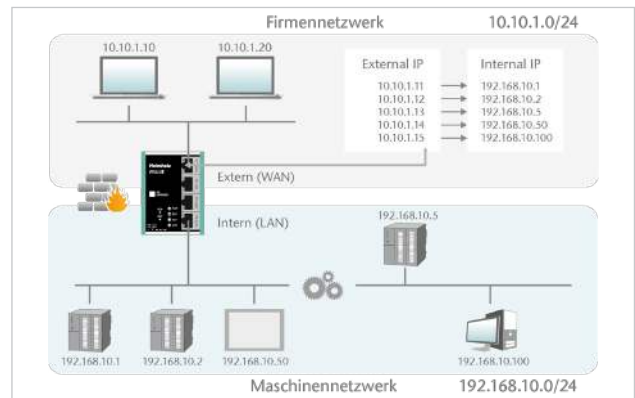
myREX24 V2 virtual
Machine access and data sovereignty in your hands
User-friendly | scalable

INDUSTRIAL ETHERNET



WALL IE, Industrial NAT gateway/firewall
Secure communication and simple addressing

WALL IE securely protects your automation network against unauthorized access.



Ethernet switch, 5/8/16-port, unmanaged, 10/100/1000 Mbps
Industrial Ethernet, networked smart



Industrial Ethernet connector, RJ45, EasyConnect®
180°



PROFIBUS Ethernet gateway
NETL ink® PRO Compact

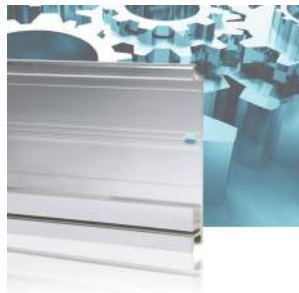
ACCESSORIES FOR THE S7



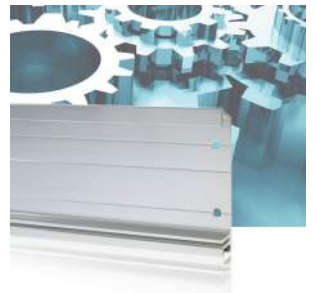
Memory cards
for 1200/1500 series



Micro memory cards
for 300 series



Mounting rails
for 1500 series
from 70 mm to 2000 mm



Mounting rails
for 300 series
from 160 mm to 2000 mm

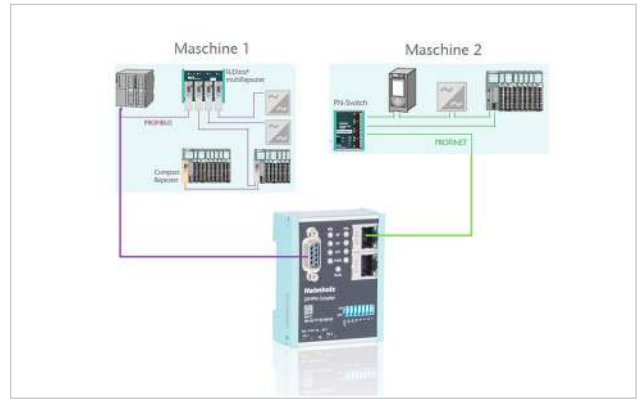
FIELD BUS APPLICATIONS | PROFINET



PROFINET/PROFINET coupler
Connecting PROFINET networks with one another



PROFIBUS/PROFINET coupler
Connect PROFIBUS and PROFINET networks



PROFINET/Modbus TCP coupler
Connect PROFINET and Modbus networks



PROFINET/EthernetIP coupler
Connect PROFINET and EthernetIP networks



PROFINET/MQTT coupler
Connect PROFINET and MQTT networks



PROFINET connector, RJ45
90° | 145° | 180°



PROFINET switch, 4/8/16-port, managed
Innovatively networking automation



PROFINET switch 8-port, managed, IP67
Also available as Ethernet Switch, 8-port, unmanaged

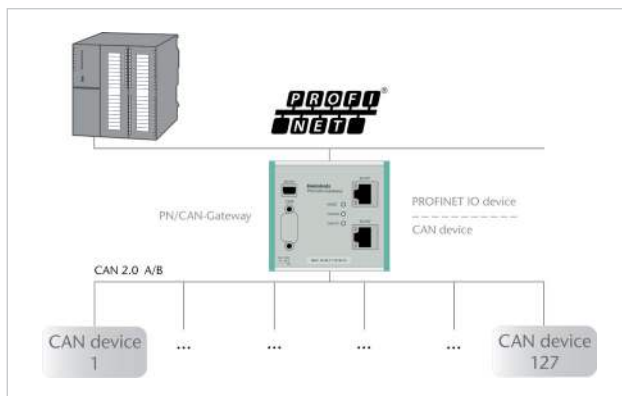


FLEXtra® PROFINET switch, 16-port
Also available as unmanaged switch

FIELD BUS APPLICATIONS | CAN BUS

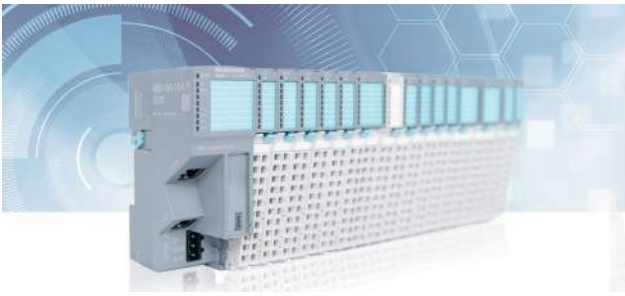


PROFINET/CAN gateway
PROFINET/CANopen® |
PROFINET/CANopen® Slave |
PROFINET/CAN Layer 2 |
PROFINET/CAN SAE J1939



CAN bus plug
90° | axial

DISTRIBUTED FIELDBUS I/O SYSTEM



TB20

The I/O system for a variety of application areas; fieldbus-overarching and proven in practice.



3-part module structure | Freely definable auxiliary contact (auxiliary terminal) | Up to 1,024 inputs/outputs per configuration possible | Hot-swap-capable modules



2, 3, 4, 6, 8-channel modules for digital and analog signals | 16-channel modules with a narrow installation width



Counter modules | SSI encoder interface | Serial communication | Energy meter | High-feature modules | Digital mix modules | DMS weighing module



TB20 ToolBox V2

Software for: Elegant planning and configuration | Diagnostics in real time | Symbol import/export | Simulation mode



Bus couplers

Direct supply of the I/O level, power module already integrated | Each I/O module can be used on all bus couplers without restriction | Up to 64 modules per bus coupler

THE FOLLOWING FIELDBUSES ARE CURRENTLY SUPPORTED:



Find your appropriate components!

Regardless of whether PROFINET, PROFIBUS, ModbusTCP, EthernetIP, MQTT, or CAN – secure your customized network solution for permanent access to machine and systems.

Please request an individual quote at:

Phone +49 9135 7380-0 | E-mail vertrieb@helmholz.de



Discover products now!