



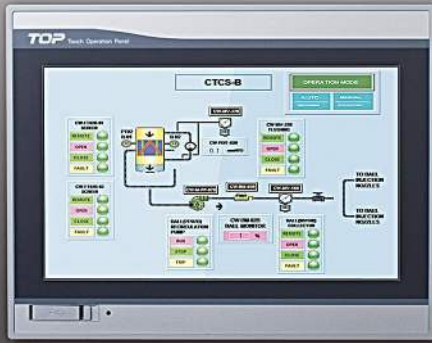
It's the **best solution** to interface your system



- Easy to use !
- High resolution
- Very bright and clear

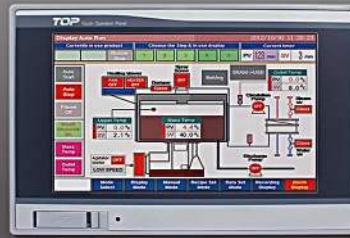
XTOP Wide Series

10"/ 800×480



XTOP10TW-UD-E
XTOP10TW-UD

7"/ 800×480



XTOP07TW-LD-E
XTOP07TW-LD

4"/ 480×272



XTOP04TW-UD

• Specifications

Functional		XTOP10TW-UD-E	XTOP10TW-UD
Display	Display Type	10.2" TFT Color	
	Color	65,536 Color	
	Display Area(mm)	222x132.48	
	Resolution(dot)	800x480	
	Brightness Level	8 Level(by software)	
	Backlight Type	LED	
	Backlight Life	50,000 hours	
Touch	Touch Type	Analog resistive film	
	Resolution(Cell)	800x480	
	Touch Life	1 million times or more	
Interface	Serial COM1	<ul style="list-style-type: none"> RS-232C Asynchronous Data bit: 7/8 bits, Stop bit: 1/2 bits, Parity bit: None/Odd/Even Baud rate: 2400~115.2kbps Connector: PS2 6pin or DSUB 9pin 1 Channel 	
	Serial COM2	<ul style="list-style-type: none"> RS-232C, RS-422/485 Asynchronous Data bit: 7/8 bits, Stop bit: 1/2 bits, Parity bit: None/Odd/Even Baud rate: 2400~115.2k, 187.5kbps(MPI Direct) Connector: DSUB 9pin 1 Channel 	
	Ethernet	<ul style="list-style-type: none"> IEEE802.3i/IEEE802.3u, 10BASE-T/100BASE-TX Connector: RJ-45 1 Channel 	—
	Option Module	—	
	USB Device	V1.1 Compatible 1 Channel, Max 5m	
	USB Host	<ul style="list-style-type: none"> Output 5V/0.5A, USB Storage V1.0 Compatible(FAT16/FAT32) USB Barcode/USB Scanner(Standard Keyboard Protocol) 	
	CF Card	CF Card(Type-II) Slot 1 Channel(FAT16/FAT32)	
Printer	Roll Printer(EPSON protocol): RS-232C, COM1 port		
Memory & Others	Screen Memory	26MB	
	Backup Memory	• 512KB: System buffer(5K Word), Including Alarm/Logging/Recipe	
	Backup Period	5 years(with rechargeable, ambient temperature 25°C)	
	Battery	<ul style="list-style-type: none"> Lithium rechargeable: Main, Charging is completed in one day (when power 30 days backup without power input) Coin type Lithium: Subsidiary(changeable), 2 years backup without power input 	
	Real Time Clock	Built in	
Status LED	Built in		

• Specifications

Functional		XTOP07TW-LD-E	XTOP07TW-LD	XTOP04TW-UD
Display	Display Type	7" TFT Color		4.3" TFT Color
	Color	65,536 Color		
	Display Area(mm)	152.4x91.5		95.04x52.86
	Resolution(dot)	800x480		480x272
	Brightness Level	8 Level(by software)		
	Backlight Type	LED		
	Backlight Life	50,000 hours		
Touch	Touch Type	Analog resistive film		
	Resolution(Cell)	800x480		480x272
	Touch Life	1 million times or more		
Interface	Serial COM1	<ul style="list-style-type: none"> RS-232C Asynchronous Data bit: 7/8 bits, Stop bit: 1/2 bits, Parity bit: None/Odd/Even Baud rate: 2400~115.2kbps Connector: PS2 6pin 1 Channel 		
	Serial COM2	<ul style="list-style-type: none"> RS-232C, RS-422/485 Asynchronous Data bit: 7/8 bits, Stop bit: 1/2 bits, Parity bit: None/Odd/Even Baud rate: 2400~115.2k, 187.5kbps(MPI Direct) Connector: DSUB 15pin 1 Channel 		• Connector: DSUB 9pin 1 Channel
	Ethernet	<ul style="list-style-type: none"> IEEE802.3i/IEEE802.3u, 10BASE-T/100BASE-TX Connector: RJ-45 1 Channel 	—	
	Option Module	—		
	USB Device	V1.1 Compatible 1 Channel, Max 5m, USB gender option		
	USB Host	<ul style="list-style-type: none"> Output 5V/0.5A, USB Storage V1.0 Compatible(FAT16/FAT32) USB Barcode/USB Scanner(Standard Keyboard Protocol) 		—
	SD Card	MMC/SD Card Slot 1 Channel(FAT16/FAT32)		—
Printer	Roll Printer(EPSON protocol): RS-232C, COM1 port			
Memory & Others	Screen Memory	26MB		6MB
	Backup Memory	• 512KB: System buffer(5K Word), Including Alarm/Logging/Recipe		
	Backup Period	5 years(with rechargeable, ambient temperature 25°C)		
	Battery	<ul style="list-style-type: none"> Lithium rechargeable: Main, Charging is completed in one day (when power input), 30days backup without power input Coin type Lithium: Subsidiary(changeable), 2 years backup without power input 		
	Real Time Clock	Built in		
Status LED	Built in		—	

General		XTOP10TW-UD-E	XTOP10TW-UD
Power	Input Voltage	DC24V(20~28V)	
	Power Consumption	20W or less	
	Voltage Sag	24V, Within 10ms	
	Insulation Resistance	500V DC, 10MΩ	
Environment	Operation Temperature(°C)	-10 ~ +50	
	Storage Temperature(°C)	-20 ~ +60	
	Operation Humidity(%RH)	0 ~ 90(No dew)	
	Atmosphere	No corrosive gas	
	Vibration Endurance	Amplitude: 10sF < 25Hz(2G) X,Y,Z each direction(for 30 minutes)	
	Noise Immunity	1000Vp-p(Pulse width 1μs)	
	Static Electricity Discharge	Connective discharge from EN61000-4-2: ±4kV	
	Shock Endurance	10G X,Y,Z each direction(for 3 times)	
	Surge Voltage	500V(Line-Line)	
	Ground Connection	Class 3(100Ω under)	
Protection Classification	IP65		
Structure	Panel Cut(mm)	260x202	
	External Dimension(mm)	270x212x58	
	Weight(kg)	1.9	
	Cooling System	Natural air circulation	
	Case Material	ABS(Resistance to flame)	

General		XTOP07TW-LD-E	XTOP07TW-LD	XTOP04TW-UD
Power	Input Voltage	DC24V(20~28V)		
	Power Consumption	12W or less		10W or less
	Voltage Sag	24V, Within 10ms		
	Insulation Resistance	500V DC, 10MΩ		
Environment	Operation Temperature(°C)	-10 ~ +50		
	Storage Temperature(°C)	-20 ~ +60		
	Operation Humidity(%RH)	0 ~ 90(No dew)		
	Atmosphere	No corrosive gas		
	Vibration Endurance	Amplitude: 10sF < 25Hz(2G) X,Y,Z each direction(for 30 minutes)		
	Noise Immunity	1000Vp-p(Pulse width 1μs)		
	Static Electricity Discharge	Connective discharge from EN61000-4-2: ±4kV		
	Shock Endurance	10G X,Y,Z each direction(for 3 times)		
	Surge Voltage	500V(Line-Line)		
	Ground Connection	Class 3(100Ω under)		
Protection Classification	IP65			
Structure	Panel Cut(mm)	199x129		121x95
	External Dimension(mm)	206x136x44		128x102x55
	Weight(kg)	0.7		0.4
	Cooling System	Natural air circulation		
	Case Material	ABS(Resistance to flame)		